

WUM-CFG

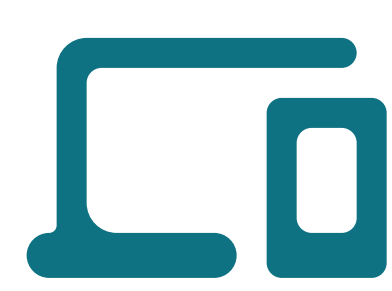
Advanced Configurator for iDomus IIoT Devices



WUM-CFG is a portable device specifically designed for remote configuration, control, and setting of the entire range of IIoT devices developed and produced by iDomus, via a dedicated mobile application.



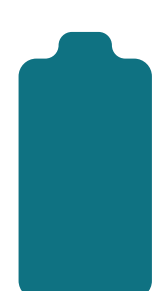
friendly and intuitive
interface



universal and accessible
mobile application



portability, durability, and
ergonomics



long-lasting
battery



enhanced
security



CHARACTERISTICS

FRIENDLY AND INTUITIVE INTERFACE

- **Simple and Efficient UI/UX:**
The user interface is designed with a focus on simplicity and ease of use, enabling fast and effortless device configuration. This solution is accessible even to technical personnel with limited experience, significantly reducing training time and risk of errors.
- **Interactive Step-by-Step Guide:**
The user completes the configuration process in a convenient and logically structured sequence, supported by video instructions and interactive AI-based online assistance, ensuring correct and complete setup on the first attempt.

ADVANCED SECURITY

For maximum protection of data and critical infrastructure, WUM-CFG uses AES-128 encryption to ensure the highest level of communication security.

COMPREHENSIVE AND ACCESSIBLE MOBILE APPLICATION

- **Extended Compatibility:**
The application is compatible with a broad range of modern mobile devices and has minimal operating system requirements: Android 9+ and iOS 13+, making it accessible to most users.
- **Built-in Multilingual Support:**
To serve a wide user base, the application interface is available in three primary languages: Romanian (RO), English (EN), and Russian (RU).

ERGONOMIC AND USER-FRIENDLY

The device is designed with a strong emphasis on ergonomics to ensure easy and efficient use in difficult conditions, from extreme temperatures to polluted environments.

COMPACT AND ULTRA-PORTABLE

Its small size and compact design allow for extremely easy transportation and storage — in a pocket or a tool case — always being on hand when needed.

LONG-LASTING BATTERY

Equipped with a high-capacity battery, the WUM-CFG offers up to 16 hours of stable, continuous operation without need for recharge, easily covering a full day of intensive field work.

The **WUM**-CFG device housing is made from a combination of resistant materials (durable plastic and silicone rubber), providing excellent protection against impacts, drops, and external factors, ensuring long use even under harsh operating conditions.





DIMENSIONS

Enclosure	IP54
Dimensions	117 x 80 x 32 mm
Weight including enclosure	195 g

OPERATIONAL CHARACTERISTICS

Operating temperature	-20...+80 °C
Humidity	up to 92% without condensation

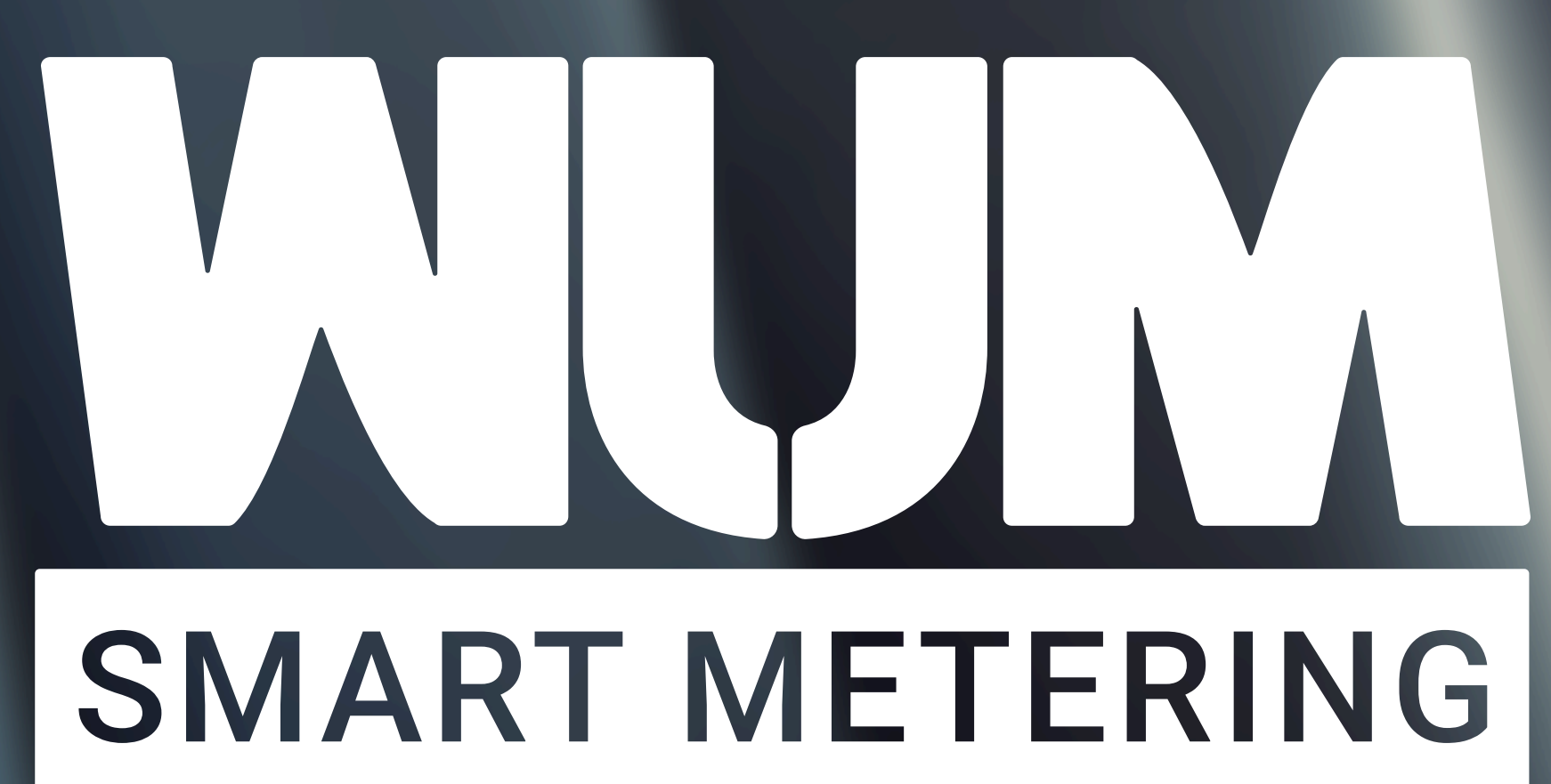
POWER SUPPLY

Lithium battery	5000 mAh
-----------------	----------

AREAS OF APPLICATION

- ✓ **Rapid and efficient configuration in critical locations:**
Fast installation and setup of WUM-IML type modules in hard-to-access or high-risk areas, such as deep wells or underground pipelines, saving time and valuable resources.
- ✓ **Remote reconfiguration and cost-effective maintenance:**
Quick remote adjustment of device settings to meet new requirements: for example, during meter replacement, module reset, or other operations. This minimizes the time required for maintenance intervention.





CONTACTS

iDomus Company S.R.L.
<https://idomus.pro>
info@idomus.pro